

How to Use PDM8.0 to Import DD File from the 3rd Party Manufacture

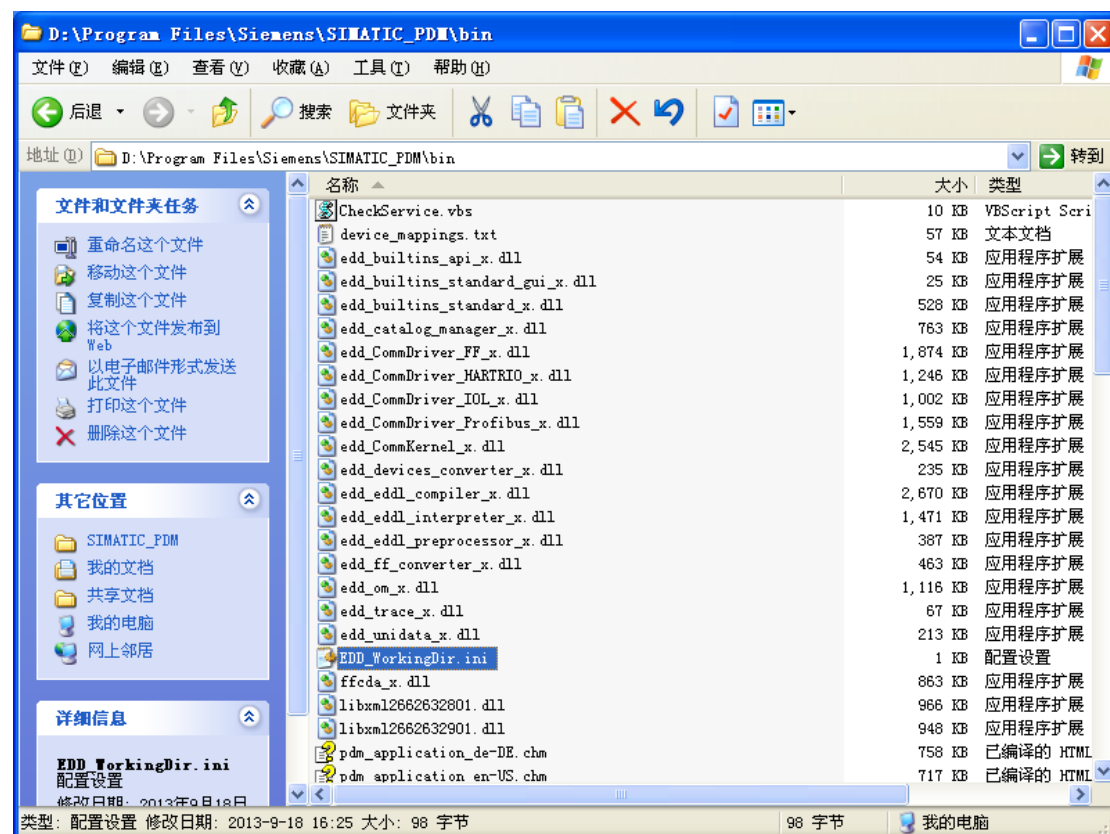
Because the 3rd party manufacture (e.g. Microcyber) isn't in the list of Siemens software, the user is still requested to add manufacture information, which is as the same as PDM6.0. The difference, is the path to save manufacture information file (manufacturer.csv).

PDM6.0 is saved in the path “???:\???\\Siemens\\STEP7\\S7BIN”.

The way to find PDM8.0 as following:

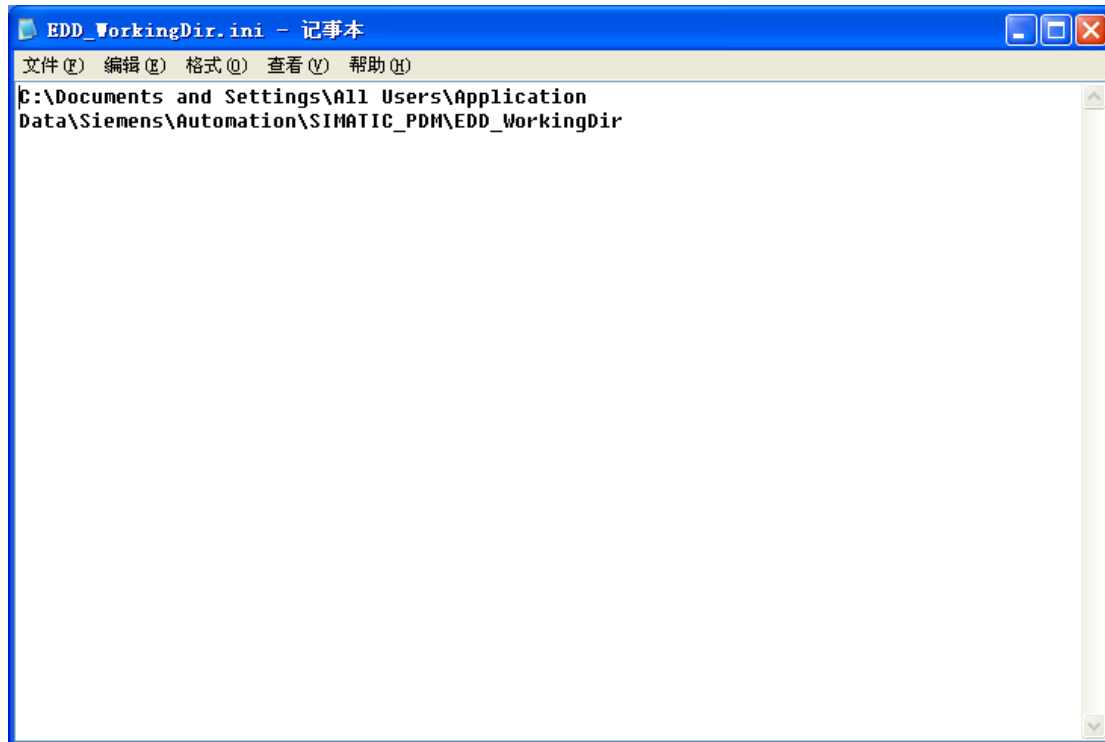
At first, to find PDM8.0 installation directory, for example:

“???:\???\\Siemens\\SIMATIC_PDM\\bin”

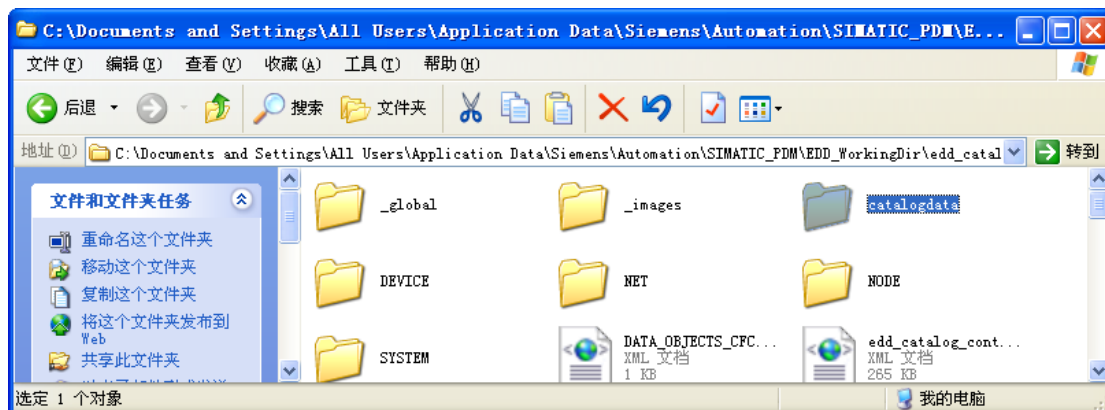
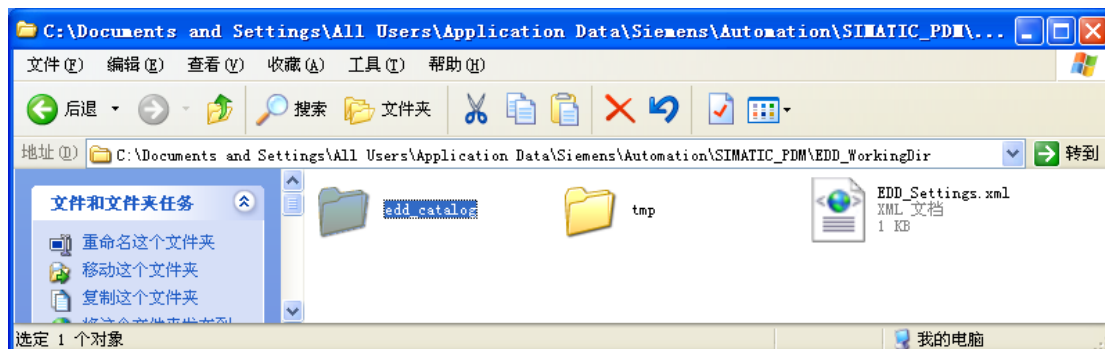


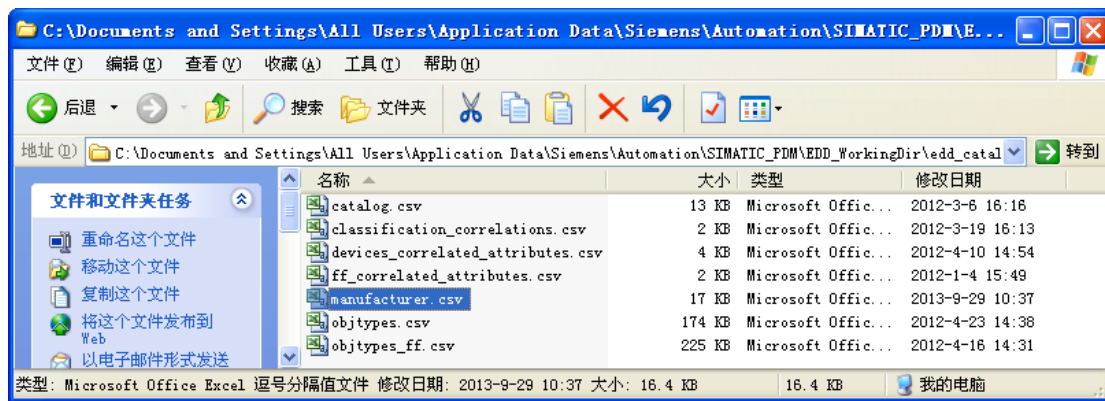
In the path, there is a file called EDD_WorkingDir.ini. Open this file will find another path, and the path is the one to save EDD and related information. For example:

“C:\Documents and Settings\All Users\Application Data\Siemens\Automation\SIMATIC_PDM\EDD_WorkingDir”



Open the path to enter edd_catalog folder, and then enter catalogdata folder. Now you will find the manufacture information file (manufacturer.csv) needs to modify.

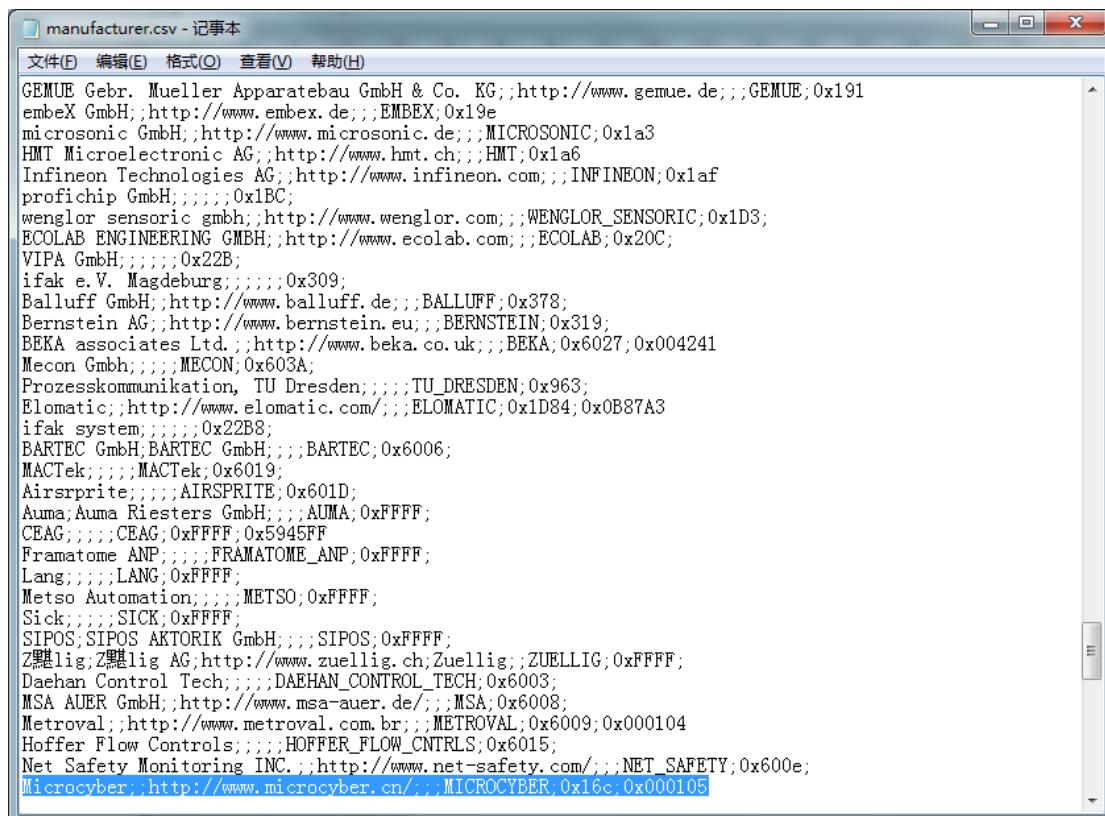




The way to modify the file as following:

Notice to open the file in “.txt”, rather than “Office”. At the last line of the file, you shall add the manufacture information to be added. For example:

Microcyber;;http://www.microcyber.cn/;;;MICROCYBER;0x16c;0x000105



After adding, please save the file and use PDM to import EDD.

Finally, the device will work in normal.

